



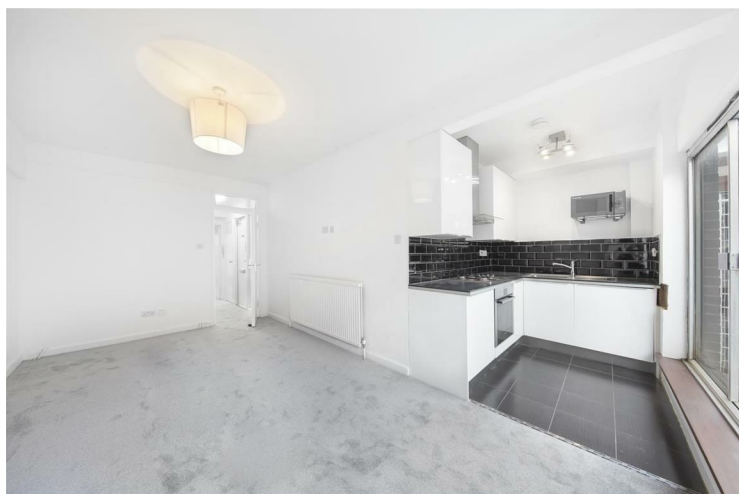
## LITTLE PORTLAND STREET LONDON

£595,000  
LEASEHOLD

PMP International are delighted to offer this beautifully positioned one-bedroom apartment, situated in the heart of Fitzrovia.

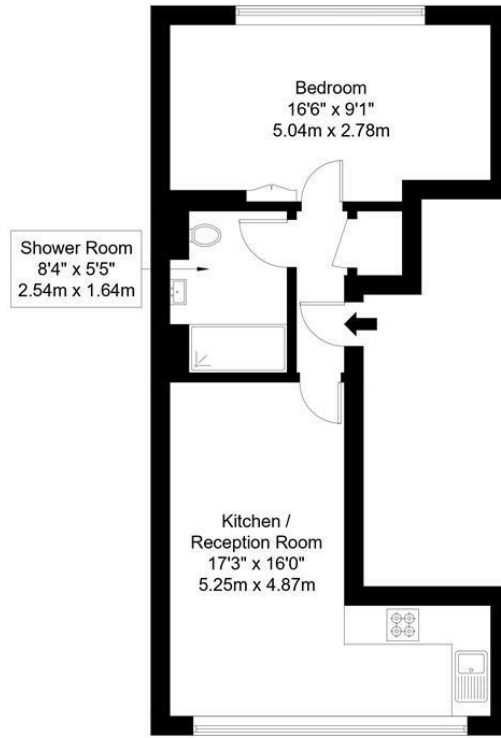
The apartment features a well-proportioned reception room filled with natural light, a comfortable double bedroom, a modern bathroom, and a thoughtfully arranged kitchen space ideal for everyday living.

The property's prime W1 address places it moments from the boutiques, cafés and restaurants of Fitzrovia, Marylebone and Soho, with Oxford Street and Regent Street just a short stroll away. Excellent transport connections from nearby Oxford Circus, Great Portland Street and Tottenham Court Road stations ensure seamless access across London.



# Little Portland Street, W1W 7JA

Approx Gross Internal Area = 41.5 sq m / 447 sq ft



Fifth Floor

Ref :

Copyright **BLEU PLAN**

The Floor plan is not to scale and measurements and areas shown are approximate and therefore should be used for illustrative purposes only. The plan has been prepared in accordance with the RICS code of Measuring Practice and whilst we have confidence in the information produced it must not be relied on. Maximum lengths and widths are represented on the floor plan. If there is any aspect of particular importance, you should carry out or commission your own inspection of the property.  
Copyright @ BleuPlan



Energy Efficiency Rating		
	Current	Potential
<i>Very energy efficient - lower running costs</i>		
(92 plus) <b>A</b>		
(81-91) <b>B</b>		
(69-80) <b>C</b>		
(55-68) <b>D</b>		<b>62</b>
(39-54) <b>E</b>	<b>48</b>	
(21-38) <b>F</b>		
(1-20) <b>G</b>		
<i>Not energy efficient - higher running costs</i>		
<b>England &amp; Wales</b>	EU Directive 2002/91/EC	

Agents Note: Whilst every care has been taken to prepare these particulars, they are for guidance purposes only. All measurements are approximate and are for general guidance purposes only and whilst every care has been taken to ensure their accuracy, they should not be relied upon and potential buyers/tenants are advised to recheck the measurements

## London

PMP International  
94 Belsize Lane  
Belsize Park  
London  
NW3 5BE

020 7701 2878

info@pmpi.co.uk

www.pmpi.co.uk

**PMP** | INTERNATIONAL